

THE
FIRST

Class

FEMALE SALE





WELCOME
TO
THE
FIRST
Class
FEMALE SALE

SALE INFORMATION

SATURDAY, DECEMBER 11, 2010 6:00PM CST

DUNLAP LIVESTOCK AUCTION, DUNLAP IOWA

SALE PARTNERS

RODGERS CATTLE CO.
WADE, KAYLENE AND RHYLEE RODGERS
515-480-6896

JR SPEAR NOLAN FERGUSON
515-480-9882 641-660-0802

REIMANN RANCHES
NICK, KYRSTIN AND CROIX REIMANN
605-871-3642

SMITH CATTLE CO.
BRAD SMITH
712-209-1500

HUNTER BROS.
CHRIS ROSA
641-203-1686

FOR NEW MAILING LIST REQUESTS
CRASHROSA @GMAIL.COM

SALE STAFF

AUCTIONEER STEVE BONHAM 405-823-2972

CRAIG TALKINGTON 789-623-1789
SCOTT MANLEY 417-860-5250
RYAN DENTON 918-629-3004
KENT JAECKE 405-408-2440

WWW.LIVEAUCTIONS.TV, LOT ONE
BRAD FAHRMEIER

CONSULTANTS

MARK CORE 641-780-4068
LUKE DORIS 620-353-4114
CHAD FORMAN 605-216-1490
TIM HECKMAN 309-255-0199
GREG KROUPA 605-730-2525
DAVID MOZIINGO 405-880-0397
JACOB TUSA 979-324-9327
TONY AUSTIN 817-304-0507
GARY OHLRICH 712-548-6481
ADAM PRYOR 712-647-8898
TYLER HUMPHREY 419-230-4350

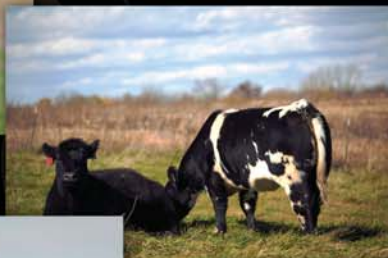
SETTLEMENT AND BIDDING

IF YOU ARE UNABLE TO BE PRESENT,
CONTACT ONE OF THE SALE CONSULTANTS
TO PLACE A BID, OR TO BE CONTACTED DURING THE SALE
OR BID VIA WWW.LIVEAUCTIONS.TV.

ALL PURCHASES MUST BE PAID IN FULL (CHECK OR BANK WIRE)
PRIOR TO LOADING OUT.

BREEDING GUARANTEE

ALL FEMALES SOLD UNDER THE CONDITION "SAFE IN CALF"
AND ATTESTED TO BY A LICENSED VETERINARIAN, SELL WITH
NO FURTHER GUARANTEE.





ON BEHALF OF THE ENTIRE FIRST CLASS FEMALE SALE CREW, I WOULD LIKE TO WELCOME YOU TO THIS YEAR'S OFFERING. AND ONCE AGAIN, THANKS FOR THE EARLY INTEREST. PLEASE LET US KNOW IF WE CAN BE OF FURTHER ASSISTANCE. WE WOULD LIKE TO EXPRESS IN THIS THIRD YEAR EVENT THAT WE APPRECIATE YOUR CONTINUED INTEREST IN THE CATTLE. WE ALSO THANK YOU FOR TAKING TIME DURING THE HOLIDAY SEASON TO BE WITH US.

WHEN WE STARTED THIS SALE WE COMMITTED OURSELVES TO OFFER THE BEST, AND TO MAKE THE FIRST CLASS FEMALE SALE A SOURCE OF SOMETHING SPECIAL. THE ORIGINAL INTENT OF THIS SALE, AND ONE THAT WE STRIVE TO KEEP AS OUR MAIN TARGET, IS THE ABILITY TO OFFER GOOD, SOUND CATTLE. WE ARE INTERESTED IN THE QUALITY CATTLE THAT WE CAN PROVIDE. NEARLY ALL THE CATTLE OFFERED IN THE PAST THREE YEARS HAVE BEEN HAND SELECTED OFF OF NUMEROUS RANCHES AND RESPECTED BREEDERS IN THE BUSINESS, WITH SOME BEING RAISED ON FARM. THEY ARE BACKED BY GENERATIONS OF BREEDING PROGRAMS AND SOLID COW FAMILIES.

LOTS OF HARDWORKING PEOPLE ARE THE RESULT OF THE SUCCESS OF THIS SALE. THE TRUE VALUE OF SUCCESS REALLY LIES IN THESE PEOPLE THAT WORK ON THE CATTLE FROM SUN UP TO SUN DOWN TO PRODUCE CATTLE THAT WILL MAKE MONEY.

THE BRED HEIFERS ARE THE MOST IMPORTANT ASPECT OF THIS SALE. THEY HAVE POTENTIAL TO MAKE OUR CUSTOMERS MONEY FAST. WE KNOW THE IMPORTANCE OF THE CLUB CALF INDUSTRY TO BREEDERS AND FAMILIES LIKE OURS. THESE FEMALES HAVE TO CONSISTENTLY AND EFFICIENTLY PRODUCE TO PAY THE BILLS.

WE TAKE PRIDE IN FINDING AND RAISING THE KIND OF FEMALES THAT ARE OFFERED IN THIS SALE. LOOKING BACK AT OUR FIRST TWO YEARS WE SEE THE HIGH QUALITY OF FEMALES OFFERED. THEY HAVE GONE ON TO BE TOP DONORS AND MADE PROGENY THAT EXCEL. THE PRODUCERS HAVE HAD HIGH SELLERS THAT HAVE IN TURN GONE ON TO BE CHAMPIONS FOR THEIR NEW OWNERS. THE FEMALES OF THIS OFFERING HAVE MATERNAL INTEGRITY THAT IS MADE UP OF SOUNDNESS, FLESHING EASE, EYE APPEAL, AND MUSCLE.

COME FRIDAY, DECEMBER 10TH AND VISIT EARLY. WE ENJOY SEEING AND MEETING FRIENDS FROM PAST SALES. WE HOPE TO SEE ALL OF YOU AT THE 3RD ANNUAL FIRST CLASS FEMALE SALE.

YOU WON'T BE DISAPPOINTED.

THE BREEDERS OF THE FIRST CLASS FEMALE SALE

Only the Best... First Class

BRED HEIFER DIVISION

WHO MADE WHO DAUGHTERS AND GRAND DAUGHTERS

Lot 1



8 119 - Black - Fall 2008
50% Simmental
Sire: Muhamad
Dam: Who Made Who

A.I. 6/1 Grizzly

ONE OF THE BEST TO SELL. LOT ONE IS NOTED AS NICK'S FAVORITE BRED HEIFER AND SHE HAS ALL OF THE QUALITY YOU WOULD EXPECT. GREAT NECKED, SUPER FEMININE, BEAUTIFUL PROFILING, AND WITH A TON OF SUBSTANCE AND POWER. LOT ONE IS A REGISTERED HALF BLOOD FEMALE BRED TO GRIZZY. THE RESULTING CALF WILL ALSO BE A HALF BLOOD. UPGRADE SEMEN WILL BE PROVIDED IF YOU WOULD LIKE TO FLUSH THIS FEMALE.

2010 FIRST CLASS FEMALE SALES

Lot 2



dr- Black - Spring 2009
Sire: Dr. Who
Dam: Maine Angus

A.I. 4/21 Total Recall

A REAL SALE FEATURE. THIS BIG BONED, THICK TOPPED, MASSIVE BODIED FEMALE IS ONE OF THE BEST IN THE OFFERING. SHE IS GREAT HAired FOR A CLEAN PEDIGREED FEMALE...BIG TIME GOOD FUTURE DONOR.

BRED HEIFER DIVISION

WHO MADE WHO DAUGHTERS AND GRAND DAUGHTERS

Lot 3



823 - Black - Fall 2008
Sire: Who Made Who
Dam: Picasso x Anchor

THIS IS A TOP FEMALE OF THIS OFFERING AND A VERY EXCITING DONOR PROSPECT. SHE COMBINES HER STOUTNESS AND COOKIE CUTTER FRONT END INTO A WELL BALANCED, UNCOMMONLY STOUT PACKAGE. LET THIS ONE BE A DONOR FOR YOU AND GENERATE YOU MANY DOLLARS IN SALES!

A.I. 5/14 Doc

2010 FIRST CLASS FEMALE SALES

Lot 4



a919- Black - Spring 2009
Sire: Chill Factor son
Dam: Who Made Who

THIS PERHAPS IS ONE OF THE MOST EXCITING MATERNAL ORIENTED FEMALES IN THE SALE. SHE IS HUGE RIBBED, DEEP SIDED AND HAS COW WRITTEN ALL OVER HER. SHE WILL BE INCREDIBLY IMPRESSIVE AS A FRONT PASTURE DONOR FEMALE. THIS HEIFER IS A MATERNAL SISTER TO THE GRAND CHAMPION HEIFER AND RESERVE SUPREME MARKET ANIMAL AT THE 2010 NATIONAL WESTERN STOCK SHOW FOR BAILEY CORE.

A.I. 5/4 Ai

BRED HEIFER DIVISION

WHO MADE WHO DAUGHTERS AND GRAND DAUGHTERS

Lot 5



55 - Black - Spring 2009

Sire: Mr. Clean

Dam: Who Made Who

A.I. 5/1 Raptor

ANOTHER ONE THAT WILL REALLY RAISE ONE. A GRANDDAUGHTER OF WHO MADE WHO, SHE IS BIG BODIED, WELL BALANCED, MODERATE FRAMED, AND STOUT. THIS IS A LEADING DONOR OPPORTUNITY AND A CHANCE TO GENERATE TOP SELLING STEERS. SHE WILL MATE WELL WITH ANY HEAT WAVE SON.

2 0 1 0 F I R S T C L A S S F E M A L E S A L E S

Lot 6



702- Black White- Spring 2009

Sire: Dr. Who

Dam: Cervesa

A.I. 6/14 Grizzly

ONE OF ONLY A FEW DR. WHO FEMALES AVAILABLE IN THE SALE THIS IS A RARE OPPORTUNITY TO GET IN ON SOMETHING SPECIAL. THIS BLACK AND WHITE FEMALE IS SMOOTH AND CORRECT COUPLED WITH EXTRA DEPTH, DIMENSION, AND STRUCTURAL SOUNDNESS.

BREDHEIFER DIVISION

WHO MADE WHO DAUGHTERS AND GRAND DAUGHTERS

Lot 7



317- Black - Spring 2009
Sire: Alias (Who Made Who)
Dam: Lifeline

THIS UNIQUELY BUILT FEMALE WILL MAKE AN IMPACT ON ANY HERD. SHE IS EXTRA LONG NECKED, BIG BELLED, AND SOUND. PAY ATTENTION; THIS ONE COULD MAKE YOU SOME MONEY.

A.I. 6/18 Grizzly

2010 FIRST CLASS FEMALE SALES

Lot 8



906- Black Blaze- Spring 2009
Sire: Who Made Who
Dam: Meyer 734

ONE LOOK AT THIS WHO MADE WHO DAUGHTER AND YOU WILL UNDERSTAND WHY WHO MADE WHO FEMALES NEVER GO OUT OF STYLE. THIS BLACK BALDY FEMALE OFFERS THE PERFECT FRAME SCORE. SHE IS EXTREMELY ATTRACTIVE THROUGH HER FRONT END, SOUND, AND FREE MOVING. EXPECT SUCCESS FROM THIS ONE.

A.I. 5/3 Doc

BRED HEIFER DIVISION

WHO MADE WHO DAUGHTERS AND GRAND DAUGHTERS

Lot 9



b1- Black - Spring 2009
Sire: Who Made Who
Dam: 6807

A TRUE FAVORITE AND REAL COMPLETE FEMALE THAT HAS A LOT OF LOOK, STYLE AND QUALITY. SHE IS GREAT HIPPED, MODERATE FRAMED, AND WILL MAKE AN EASY KEEPING, PRODUCTIVE COW THAT WILL WORK TO ANY AI SIRE. THIS WILL MAKE ONE HECK OF A COW. BE SURE TO CIRCLE HER ON DECEMBER 11TH.

A.I. 5/5 Basic Instinct

2010 FIRST CLASS FEMALE SALES

Lot 10



b3- Black- Spring 2009
Sire: Who Made Who
Dam: 6807

THE BEST WAY TO DESCRIBE THIS ONE IS WOW! SHE IS LOADED WITH MATERNAL GENETICS AND SHE HAS A TREMENDOUS AMOUNT OF POWER TO GO WITH IT. SUPER SOGGY, DEEP AND EXTRA CLEAN MADE. THIS IS THE TYPE OF FEMALE THAT WILL RAISE SHOW STEERS AND HEIFERS AND ALSO HERD SIRE PROSPECTS. HER DAM IS ONE OF THE MOST IMPRESSIVE 6807 DAUGHTERS. SHE IS TRULY A LEADING DONOR CANDIDATE TO THE OFFERING.

A.I. 5/16 Baseline

BRED HEIFER DIVISION

FULL FLUSH INFLUENCED GENETICS

Lot 11



sis - Black - Spring 2009
Sire: Heat Wave
Dam: 7587 Full Flush

A TRUE GENETIC POWERHOUSE; A FULL SIB TO WALKS ALONE. THIS SIB IS THE ONLY BRED FEMALE EVER TO SELL. SEVEN MATERNAL SIBLINGS HAVE SOLD IN THE PAST AVERAGING OVER \$30,000. WE CAN NOT WAIT TO SEE WHAT HER OFFSPRING CAN DO.

A.I. 6/12 Wisdom

2010 FIRST CLASS FEMALE SALES

Lot 12



905- Black White- Spring 2009
Sire: Full Flush
Dam: Meyer 734 x OCC Anchor

IT IS HARD TO IMAGINE FEMALES THAT ARE MORE RIGHT THAN FULL FLUSH FEMALES. THEY ARE A SURE SHOT FOR MAKING MONEY WHEN MATED TO HEAT WAVE AND HIS SONS. THIS FEMALE IS BACKED BY A ONE OF A KIND MEYER 734 FEMALE THAT IS A CURRENT DONOR FOR THE BADGER AND HUGHES PROGRAMS.

A.I. 5/12 Total Solution

BRED HEIFER DIVISION

IRISH WHISKEY DAUGHTERS AND GRAND DAUGHTERS

Lot 13



1560 - Black - Fall 2008
Sire: Irish Whiskey
Dam: Heart Beat

A.I. 5/15 Doc

HERE SHE IS, ANOTHER SALE FEATURE; IT IS HARD TO SEE THIS ONE GO BUT AS WADE WOULD SAY, "IF YOU DON'T BRING THE GOOD ONES, DON'T BRING THEM AT ALL." 1560 IS A VERY DESERVING FEMALE TO LEAD OFF THE BRED HEIFERS. BUT, AS YOU WILL SEE, THEY ARE GOOD ALL THE WAY THRU.

2010 FIRST CLASS FEMALE SALES

Lot 14



wh15 - Black - Spring 2009
Sire: Northern Improvement
Dam: Irish Whiskey

A.I. 6/9 Bismark

ONE OF THE FAVORITES AT REIMANN'S, THE PICTURE TRULY DESCRIBES THIS FEMALE. LOT 14 IS HUGE RIBBED AND TOPPED, WIDE BASED AS YOU NEED ONE, SMOOTH SHOULDERED, AND COON-FOOTED. LOOK THIS ONE UP WHEN YOU GET TO DUNLAP.

BRED HEIFER DIVISION

IRISH WHISKEY DAUGHTERS AND GRAND DAUGHTERS

Lot 15



rcc - Black Brockle - Spring 2009
Sire: Kents Whiskey
(Irish Whiskey x Meyer 734)
Dam: My Turns Mother

BRED TO RAISE CHAMPIONS; THIS BIG BODIED, LONG NECKED, COON-FOOTED FEMALE IS TRULY A SALE FEATURE AND A FUTURE DONOR FOR ANY PROGRAM. SHE IS A MATERNAL SISTER TO MY TURN, AND LOOKS TO HAVE AS MUCH POTENTIAL AS ANYTHING IN THE OFFERING.

A.I. 5/9 Doc

2010 FIRST CLASS FEMALE SALES

Lot 16



917 - Black - Spring 2009
Sire: Irish Whiskey
Dam: Angus

A REALLY BIG RIBBED HEIFER THAT HAS LOTS OF DEPTH AND LENGTH OF FRONT. SHE IS IDEAL IN HER DESIGN, AND VERY CORRECT WITH LOTS OF BONE, FOOT AND A BIG HIP. THESE WELL CONSTRUCTED WHISKEY FEMALES WILL ADD BALANCE AND EYE APPEAL TO THE SUPER STOUT CLUB CALF BULLS OF TODAY. SHE IS GUARANTEED SAFE TO THE LEGENDARY MAXI ANGUS BULL.

A.I. 5/17 Maxi

BRED HEIFER DIVISION

IRISH WHISKEY DAUGHTERS AND GRAND DAUGHTERS

Lot 17



918 - Black - Spring 2009
Sire: Irish Whiskey
Dam: Sharpie (Witch Dr. x Meyer)

918 IS MODERATE, BIG RIBBED, LONG FRONTED, BIG AND SQUARE HIPPED, WITH ADDED MUSCLE SHAPE. A TRUE DONOR CANDIDATE. SHE IS LIKELY TO SELL BELOW HER FUTURE VALUE. ONE OF THE BEST TO SELL. STUDY YOUR LESSON, COWBOYS.

A.I. 5/4 Northern Improvement

2010 FIRST CLASS FEMALE SALES

Lot 18



6-5845 - Black Blaze - Spring 2009
Sire: Mission Statement (Friction)
Dam: Irish Whiskey

A PRIME EXAMPLE OF WHAT MADE FRICTION AND IRISH WHISKEY SO POPULAR IN THE INDUSTRY. THIS BLAZED FACED HEIFER IS WELL BALANCED, BIG BODIED, AND GREAT PROFILING. HER VALUE WILL ONLY INCREASE.

A.I. 6/20 Aberdeen

BRED HEIFER DIVISION

2010 FIRST CLASS FEMALE SALES

Lot 19



18 - Black Brockle- Spring 2009
Sire: Witch Doctor
Dam: Big Cat

A.I. 5/29 Total Solution

THIS BEAUTIFUL BROCKLE FACE WILL BE A SALE DAY FAVORITE. FROM HER NOSE TO HER TOES SHE HAS IT ALL. FEMALES BRED LIKE THIS ARE EXTREMELY HARD TO FIND PAY ATTENTION TO THIS ONE.

2010 FIRST CLASS FEMALE SALES

Lot 20



916 - Black - Spring 2009
Sire: Carnac
Dam: 043

A.I. 5/4 Ali

A GREAT GENETIC PACKAGE. THE DAM OF THIS LOT IS KROUPA 043, A STRICTLY BUSINESS /FULL THROTTLE THAT NEEDS NO INTRODUCTION TO THE BUSINESS. SHE HAS SOLD OVER \$350,000 IN PROGENY. A STEER FOR \$56,000; ANOTHER \$31,000 AND THE LIST GOES ON. SHE IS STOUT, GOOD BODIED AND HAS AN EXTRA LONG FRONT. A SALE FAVORITE. SHE IS A TRUE DONOR CANDIDATE. CAN YOU SAY POWER IN THE BLOOD!

BRED HEIFER DIVISION

IRISH WHISKEY DAUGHTERS AND GRAND DAUGHTERS

Lot 21



540 - Black - Spring 2009
Sire: Firewater (Irish Whiskey)
Dam: Chill Factor

A.I. 6/15 Jupiter

540 IS A LONG NECKED, MODERATE FRAMED, SMOOTH SHOULDERS WHISKEY GRANDDAUGHTER. BREED HER MATERNALLY OR FOR STEERS AND SHE WILL BE PROFITABLE.

Lot 22



370 - Black - Spring 2009
Sire: Dubai (Irish Whiskey)
Dam: Fame Angus

A.I. 6/20 Aberdeen

DUBAI FEMALES ARE MAKING PHENOMENAL COWS. 370 IS VERY COMPLETE IN HER MAKE UP, MODERATE FRAMED, AND SOUND.

2010 FIRST CLASS FEMALE SALES

Lot 23



7 - Black - Spring 2009
Sire: Northern Improvement
Dam: Irish Whiskey son

A.I. 6/20 Aberdeen

THIS FEMALE IS ULTRA SMOOTH AND COMPLETE. NORTHERN IMPROVEMENT AND IRISH WHISKEY ARE A GREAT COMBINATION. CATTLE LIKE THIS ARE BECOMING MORE AND MORE POPULAR.

Lot 24



8 - Black - Spring 2009
Sire: Firewater (Irish Whiskey)
Dam: Northern Improvement x Dr. Who

A.I. 6/3 Maxi

ANOTHER SALE FEATURE: THIS FEMALE HAS DONOR POTENTIAL IN ANY PROGRAM, BUT LIKELY TO SELL BELOW HER FUTURE VALUE.

BRED HEIFER DIVISION

IRISH WHISKEY DAUGHTERS AND GRAND DAUGHTERS

Lot 25



7102 - Black - Spring 2007
Sire: Irish Whiskey
Dam: Simm Angus

A.I. 6/10 Heat Wave 5
PE Calvabull

A YOUNG COW WITH UNLIMITED POTENTIAL. HER FIRST CALF FOR YOU COULD BE A FUTURE SUCCESS STORY. 702 IS BIG HIPPED, BIG FOOTED, AND LONG NECKED.

Lot 26



wht 57 - Black - Spring 2009
Sire: Lookout
Dam: Irish Whiskey son

A.I. 6/12 Grizzly

THIS FEMALE HAS COW WRITTEN ALL OVER HER. SHE IS A SUPER COMPLETE FEMALE THAT IS MODERATE IN HER DESIGN AND SOUND STRUCTURED.

2010 FIRST CLASS FEMALE SALES

Lot 27



322 - Black - Spring 2009
Sire: Firewater (Irish Whiskey)
Dam: Big N Rich

A.I. 6/17 Aberdeen

ANOTHER MODERATELY CONSTRUCTED IRISH WHISKEY GRANDDAUGHTER. IF YOU LIKE THEM LONG NECKED AND BIG BODIED IN A COMPLETE PACKAGE YOU WILL LIKE THIS ONE. SHE MAY BE THE BUY OF THE SALE.

Lot 28



rcc912 - Black - Spring 2009
Sire: Irish Whiskey
Dam: Birkeland Angus

A.I. 4/24 Doc

912 HAS MONSTER LEG AND BONE, SHE IS BIG MIDDLED, AND EASY FLESHING ALL IN A MODERATE PACKAGE. THIS IS THE TYPE AND KIND THAT IS WORKING WELL WITH TODAY'S CLUB CALF BULLS.

First Class December 11, 2010

BRED HEIFER DIVISION

2010 FIRST CLASS FEMALE SALES

Lot 29



829 - Black - Fall 2008
Sire: Full Flush
Dam: Witch Dr.
A.I. 5/4 Doc

PROBABLY ONE OF THE STOUTEST, MOST SOUGHT AFTER, FULL FLUSH BRED FEMALES WE HAVE EVER OFFERED AT THIS SALE. OUT OF AN AWESOME WITCH DR. COW, THIS FEMALE HAS EXTRA RIB AND A SUPER FRONT END. BREED HER MATERNAL OR TO HEAT WAVE AND HIS SONS TO MAKE PURPLE BANNER KIND OF STEERS.

2010 FIRST CLASS FEMALE SALES

Lot 30



8000 - Red - Fall 2008
Sire: Leroy Brown
Dam: Oahe Wind x Heat Seeker
A.I. 6/12 Tiger Woods

THIS BRED HEIFER IS ONE OF THE BIGGEST HIPPED, BIGGEST TOPPED, MOST MASSIVE HEIFERS TO SELL SHE IS ONE THAT NICK NOTED AS ONE OF HIS FAVORITES AND WILL DEFINITELY STAND OUT SALE DAY.

BRED HEIFER DIVISION

2010 FIRST CLASS FEMALE SALES

Lot 31



DAM OF LOT 31



904 - Silver Baldie - Spring 2009
Sire: Milkman
Dam: Yellow Jacket's Full Sister

A.I. 5/30 Carpe Diem
PE Doc son Big n Rich

904 IS SO SMOOTH AND GORGEOUS THAT YOU FORGET HOW POWERFUL SHE IS. FROM HEAD TO TAIL, THIS COW IS WIDE, SOFT, FLEXIBLE AND IS AS EASY ON THE EYES AS THEY COME. BE SURE TO LOOK AT THIS FOOT STOMPIN, GROUND POUNDIN, SILVER BALDIE ON DECEMBER 11TH. PREG CHECK WAS TOO CLOSE TO CALL A I'D OR BULL BRED.

2010 FIRST CLASS FEMALE SALES

Lot 32



LOT 32 AS A CALF



U243 - Black White - Fall 2008
Sire: Heat Seeker
Dam: Maine Angus

A.I. 5/2 Total Recall

A SALE FEATURE: HERE IS A HEIFER THAT YOU CANNOT MISS. SHE HAS THE LOOK OF A LEADING FRONT PASTURE DONOR; BIG AND WIDE, WITH A STOUT HIP AND HIND LEG, AND SOUND STRUCTURED. IF YOU WANT TO RAISE STEERS IN ANY PART OF THE COUNTRY THIS IS ONE TO TAKE HOME. IT DOESN'T MATTER HOW MUCH SHE BRINGS, SHE IS LIKELY TO SELL BELOW HEW FUTURE VALUE.

BRED HEIFER DIVISION

2010 FIRST CLASS FEMALE SALES

Lot 33



5char - Smoke - Spring 2009
Sire: Alias (Who Made Who)
Dam: Irish Whiskey son

THIS SILVER HEIFER IS WELL BALANCE, FLAT SHOULDERS, SOUND MADE, AND EYE APPEALING. WITH WHO MADE WHO AND IRISH WHISKEY IN HER PEDIGREE SHE WILL BE AN EXCELLENT CANDIDATE FOR BREEDING TO HEAT WAVE SONS.

A.I. 6/9 Bismark

2010 FIRST CLASS FEMALE SALES

Lot 34



510 - Smoke - Spring 2009
Sire: Alias(Who Made Who)
Dam: 050 Kroupa Donor (Payback)

SHE IS A TRUE SILVER FOX. SHE IS EXTREMELY SOUND, SOFT BELLED, AND EASY FLESHING. 510 HAS A UNIQUELY SOFT HAIR COAT FOR HER COLOR. LOOK HER UP SALE DAY.

A.I. 5/12 Total Solution

BRED HEIFER DIVISION

2010 FIRST CLASS FEMALE SALES

Lot 35



31 - Red White - Spring 2009
Reg. Shorthorn
Sire: Jakes Proud Jazz
Dam: Vortec

A.I. 5/20 Dubai

THIS PUREBRED SHORTHORN FEMALE IS BIG MIDDLED, FLAT SHOULDERED AND VERY SOUND IN HER MAKEUP. 31 WILL WORK TO RAISE STEERS OR HEIFERS. HER FIRST CALF CAN BE REGISTERED AS MAINTAINER, SHORTHORN, OR CHI.

2010 FIRST CLASS FEMALE SALES

Lot 36



Shorthorn - Redneck Roan - Spring 2009
Sire: Polar Express
Dam: Double Stuff

A.I. 5/12 Total Solution

IF YOU ARE LOOKING FOR A BIG BONED, STOUT, RED NECKED ROAN THIS ONE IS FLAT GOOD. THIS IS A DONOR QUALITY FEMALE WITH TONS OF POTENTIAL.

BRED HEIFER DIVISION

2010 FIRST CLASS FEMALE SALES

Lot 37



0402 - Black - Spring 2009
Sire: Proud Jazz
Dam: Deja Vu
A.I. 6/30 Doc

0402 IS A FULL SISTER TO THE EXTREMELY POPULAR CHAMPION MARKET ANIMAL AT THE SOUTH DAKOTA STATE FAIR. SHE IS HAIRY LEGGED, BIG BONED, AND MODERATE IN HER DESIGN. THIS IS A PRIME CANDIDATE TO BE BRED TO WALKS ALONE OR BELIEVE IN ME, THE HIGHLY ANTICIPATED BULL OF 2011, AND BROTHER TO WALKS ALONE.

2010 FIRST CLASS FEMALE SALES

Lot 38



Geff - Black White - Fall 2008
Sire: Meyer x Heart Beat
Dam: Warhorse x Angus

THIS BLACK AND WHITE FEMALE IS A GREAT PROFILING GRANDDAUGHTER OF MEYER. SHE IS BIG BODIED, STRAIGHT LINED, SMOOTH MADE, AND SOUND AS YOU CAN MAKE ONE. IT IS HARD TO FIND REAL BALANCE AND EYE APPEAL THAT THIS HEIFER POSSESSES.

A.I. 6/8 Mercedes Benz

BRED HEIFER DIVISION

2010 FIRST CLASS FEMALE SALES

Lot 39



500 - Black White - Spring 2009
Sire: Sun Seeker
Dam: Full Flush son

HERE IS A GREAT BALANCED, COOL FRONTED, COOL COLORED, SUPER SOUND HEIFER. SHE IS REALLY WIDE IN HER SKELETAL MAKEUP. SHE WAS A LITTLE GREENER ON PICTURE DAY, SO TAKE A SECOND LOOK ON SALE DAY. SHE WILL RAISE ONE.

A.I. 4/21 Total Recall

2010 FIRST CLASS FEMALE SALES

Lot 40



52 - Black White - Spring 2009
Sire: Woolly Bully
Dam: Full Flush son

52 IS A RARE COMBINATION OF PHENOTYPE AND GENETICS. THIS WOOLLY BULLY DAUGHTER COULD GO ON TO DO GREAT THINGS. SUPER LONG FRONTED, SQUARE HIPPED, AND BIG MIDDLE MAKE HER HIGHLY MARKETABLE AS A FUTURE DONOR.

A.I. 5/1 Total Recall

BRED HEIFER DIVISION

2010 FIRST CLASS FEMALE SALES



©Linde

Two in a Row

Lot 41



911 - Black - Spring 2009
Sire: Heat Wave
Dam: Jack Frost
P.E. 5/7 to 7/7 Just Right son

Lot 42



9119 - Black - Spring 2009
Sire: Heat Wave
Dam: Jack Frost
P.E. 5/7 to 7/7 Just Right son

THESE HEIFERS ARE FULL SISTERS TO TWO OF THE FAVORITE STEERS SOLD BY RODGERS CATTLE CO. NOT MANY STEERS HAVE WON THE STATE FAIR TWICE. HERE IS YOUR CHANCE TO GET ON BOARD. BACKED BY LOTS OF MATERNAL COW POWER, THESE FEMALES WILL BE GREAT PRODUCERS.

BRED HEIFER DIVISION

2010 FIRST CLASS FEMALE SALES

Lot 43



jwr - hereford - Spring 2009
Sire: Johnny Walker Red
Dam: Hereford

THIS HEREFORD MARKED FEMALE WILL WORK HER WAY INTO ANY DONOR PROGRAM TO RAISE HEREFORD STEERS. SHE IS EXTREMELY STOUT IN HER MAKEUP, SOUND IN HER KIND, AND HER CARPE DIEM CALF SHOULD PAY SHORT TERM DIVIDENDS.

A.I. 4/28 Carpe Diem

2010 FIRST CLASS FEMALE SALES

Lot 44



17 - Black White - Spring 2008
Sire: Sun Seeker
Dam: Dictator

A.I. 6/5 Walks Alone

ALL THE HARD WORK IS DONE ON THIS ONE. THIS THREE YEAR OLD FEMALE IS NICELY BALANCED, LONG FRONTED, AND HAS ALL THE RIGHT PARTS. WALKS ALONE WILL WORK GREAT ON THIS FEMALE. TH AND PHA FREE.

Lot 45



jb - Black - Spring 2009
Sire: Sun Seeker
Dam: Meyer 734

A.I. 5/16 Doc

COWY BODIED AND COWY LEGGED, SMOOTH BUILT AND EXTREMELY HAIRY THESE SUN SEEKERS ARE BECOMING AWESOME COWS. BID WITH CONFIDENCE.

First Class December 11, 2010

BRED HEIFER DIVISION

ANGUS INFLUENCED FEMALES

Lot 46



910 - Black - Spring 2009
Sire: Northern Improvement
Dam: Alias x Meyer 734

ANOTHER NORTHERN IMPROVEMENT FEMALE THAT WILL BE A CROWD FAVORITE. IT IS UNIQUE TO SEE AN ANGUS FEMALE THIS POWERFUL, BIG BONED, AND BEAUTIFULLY FRONTED. SHE IS EXTREMELY SOUND AND PERFECTLY BALANCED. SHE IS SPECIAL.

A.I. 6/3 I-80

2010 FIRST CLASS FEMALE SALES

Lot 47



909 - Black - Spring 2009
Sire: Northern Improvement
Dam: Hard Core

909 IS BIG FOOTED, GOOD BONED AND INTRIGUINGLY STOUT FOR BEING ANGUS Sired. SHE IS ONE OF THE BEST HAired, LONGEST NECKED, TH/PHA FREE FEMALES TO SELL IN 2010. THIS FEMALE'S PEDIGREE CLOSELY RESEMBLES REAL MONEY'S DAM; A \$15,000 BULL FROM THE 2009 SALE.

A.I. 5/4 Ali

BRED HEIFER DIVISION

ANGUS INFLUENCED FEMALES

Lot 48



18 - Black - Spring 2009
Sire: Monopoly
Dam: Northern Improvement

A.I. 5/2 Total Recall

MARK MY WORDS, THESE MONOPOLY HEIFERS WILL BE SOUGHT AFTER FEMALES IN A FEW YEARS. SHE IS VERY SMOOTH SHOULDERED, NICELY MADE, WITH A GREAT DEAL OF STYLE AND QUALITY. 18 WILL MAKE A GREAT ADDITION TO ANY CLUB CALF PRODUCING HERD.

2010 FIRST CLASS FEMALE SALES

Lot 49



28 - Black - Spring 2009
Sire: Monopoly
Dam: Northern Improvement

A.I. 5/2 Total Recall

SHE IS VERY SIMILAR IN HER TYPE AND KIND TO 18. SHE WILL WORK WELL BRED TO MAINE BULLS AND CLUB CALF BULLS AND HAS THE LOOK TO PRODUCE TOP SELLING STEERS OR HEIFERS. LIKELY TO SELL BELOW HER FUTURE VALUE.

BRED HEIFER DIVISION

FRICION DAUGHTERS

Lot 50



814 - Black - Fall 2008
Sire: Friction
Dam: Contagious
A.I. 5/15 Doc

POWERFUL AND FEMININE BEST DESCRIBES THIS FRICTION DAUGHTER. TAKE A NOTE OF THE HIP AND HIND LEG IN THIS HEIFER WHEN COMBINED WITH HER LOOK AND BROODINESS, SHE HAS FEMALE WRITTEN ALL OVER HER. SHE IS SUPERLONG NECKED WITH LOADS OF QUALITY. ONE OF MY FAVORITES, MAKE THIS TOP FEMALE YOUR NEXT DONOR PROSPECT.

2010 FIRST CLASS FEMALE SALES

Lot 51



821 - Black - Fall 2008
Sire: Friction
Dam: Witch Dr. x Meyer 734
A.I. 5/4 Doc

821 IS A PERFECT FEMALE TO BUILD ON. SHE IS EXACTLY RIGHT IN TERMS OF HER SIZE AND DESIGN AND POSSESSES THE MATERNAL EXCELLENCE THAT HAS MADE THESE FRICTION DAUGHTERS SO POPULAR. WITH FRICTION AND MEYER 734 IN HER BACKGROUND, SHE WOULD BE A VERY INFLUENTIAL DONOR IN ANYONE'S PASTURE.

BRED HEIFER DIVISION

FRICITION DAUGHTERS

Lot 52



93 - Black - Spring 2009
Sire: Hide n Watch
Dam: Friction

ANOTHER REAL SOLID, COMPLETE HEIFER BACKED BY PROVEN GENETICS. SHE IS MODERATE AND SQUARE WITH THE LOOKS OF A BIG TIME PRODUCER.

A.I. 6/17 Grizzly

2010 FIRST CLASS FEMALE SALES

Lot 53



112 - Black - Spring 2009
Sire: Friction
Dam: Maine

PAY ATTENTION TO THIS FRICITION FEMALE. SHE IS EXTRA HAIRY AND EXTRA SOUND FOR HER CLEAN PEDIGREE. FRICITION FEMALES ARE FEW AND FAR BETWEEN. POSSIBLE BUY OF THE SALE.

A.I. 5/15 Doc

BRED HEIFER DIVISION

FEMALES FOR PRODUCTION



2 216 - Black - Spring 2009
Sire: Jimmy the Greek
Dam: Chill Factor

A.I. 6/17 Aberdeen



3 103 - Black - Spring 2009
Sire: Heat Wave
Dam: Frosty

A.I. 6/2 Bismarck



921 - Black - Spring 2009
Sire: Monopoly
Dam: Friction

A.I. 5/18 Ali



902 - Black - Spring 2009
Sire: Hillbilly Deluxe
Dam: 6807/EXT

A.I. 5/3 I80



m 206 - Black - Spring 2009
Sire: I am Ledgend
Dam: Meyer 734

A.I. 4/26 Total Solution



314 - Black - Spring 2009
Sire: Warrant
Dam: Saugahatchee

A.I. 6/5 Bismarck PE Cavabull



12 - Black - Spring 2009
Sire: Sun Seeker
Dam: Dictator

A.I. 5/10 Total Recall



3 - Black - Spring 2009
Sire: Full Flush son
Dam: Northern Improvement

A.I. 6/3 Bismarck



8 152 - Black - Fall 2008
Sire: Dr Who
Dam: Intrepid (Simmi)

A.I. 6/22 Grizzly



914 - Black - Spring 2009
Sire: Unforgiven
Dam: Power Drive

A.I. 5/4 Doc



924 - Black - Spring 2009
Sire: Point Taken
Dam: WD/Meyer 734/Cunia

A.I. 5/17 Ali



ylw 5 - Black - Spring 2009
Sire: Easy Out
Dam: Maine Angus

A.I. 6/16 Mercedes Benz

BRED HEIFER DIVISION

FEMALES FOR PRODUCTION



Lot 66
b2- Black - Spring 2009
Sire: Who Made Who
Dam: 6807

A.I. 5/14 Baseline



Lot 67
ace- Black - Spring 2009
Sire: Ace of Diamonds
Dam: Fear This x Draft Pick

A.I. 6/16 Who Made Who



Lot 68
908- Black - Spring 2009
Sire: Northern Improvement
Dam: Ali x Sandman

A.I. 5/26 Total Solution



Lot 69
935- Black - Spring 2009
Sire: Money Shot
Dam: Simm Maine Angus

A.I. 6/16 Northern Improvement



Lot 70
05- Black - Spring 2009
Sire: Draft Pick Son
Dam: Maine Angus

A.I. 5/2 Raptor



Lot 71
red tg- Black - Spring 2009
Sire: Hairy Bear
Dam: Habanero Son

A.I. 4/23 Total Recall

LOT 56

THIS ONE IS THE TOTAL PACKAGE. BONE, MASS, MUSCLE COMBINED WITH HAIR AND A MODERATE FRAME.

LOT 57

THIS HEIFER IS PURE POWER AND PLENTY OF IT. HER PERFECT HIP, PROFILE, AND LONG NECK FORM A LOOK YOU CAN'T IGNORE.

LOT 63

THIS HALF BLOOD SIMMENTAL FEMALE MAY BE THE HIGHEST PERFORMING FEMALE IN THE OFFERING. SHE IS SOFT IN HER LOOK, WITH EXTRA LENGTH OF BODY, NECK AND GREAT HAIR. SHE COULD BE THE BEST BUY OF THE SALE.

LOT 64

IT IS RARE TO FIND ONE THIS FLAT SHOULDERED, CHIZEL NECKED THAT STILL HAS THIS MUCH SUBSTANCE. SHOULD HAVE BEEN A SALE FEATURE.

LOT 66

THIS IS ANOTHER POWERFUL WHO MADE WHO DAUGHTER. SHE HAS THE LOOK AND POWER TO GO WITH IT. SHE IS GREAT MADE WITH A PERFECT HIP AND LEG AND ABUNDANCE OF RIB. IT IS HARD TO BREED FEMALES THAT LOOK THIS GOOD AND STAY THIS PRODUCTIVE LIKE THESE WHO MADE WHO X 6807'S DO. THESE GOOD BRED HEIFERS LIKE THIS ONE HAVE THEIR ENTIRE PRODUCTIVE LIFE IN FRONT OF THEM.

LOT 67

RESERVE SHORTHORN PLUS HEIFER IOWA STATE FAIR, CLASS WINNER SHORTHORN JR. NATIONALS, A 2 RING CLASS WINNER IN THE MAINTAINER SHOW AT THE KANSAS BEEF EXPO. DUAL REGISTERED AS A 50% SHORTHORN PLUS AND A 37.5% MAINTAINER. ACE OF DIAMOND DAUGHTERS ARE CALVING EASILY AND ARE TEXT BOOK UDDERED.

LOT 68

LOTS OF BALANCE AND EYE APPEAL IN THIS SUPER FRONTED FEMALE. SHE IS SQUARE HIPPED, STRONG TOPPED AND HAS LOTS OF LOOK.

LOT 69

THIS DUELLO CATTLE BRED STAR HEADED FEMALE IS THE PERFECT PICTURE OF FEMININITY, BALANCE AND EYE APPEAL. A FORMER SHOW HEIFER OF KILEY ELDERS SHE IS BETTER IN PERSON. IF YOU WANT A SUPER SOUND ONE THAT IS THE RIGHT SIZE, SOUND AND COOL LOOKING WITH A STAR HEAD TO CAP IT OFF THEN THIS IS THE ONE.

LOT 70

A BIT GREENER, BUT OUT OF A TREMENDOUS COW, THIS ONE HAS ALL THE RIGHT PARTS. SHE WILL BE A FUTURE SUCCESS STORY. I DON'T KNOW WHY WE DIDN'T MAKE HER A SALE FEATURE.

YOUNG COW DIVISION

WITH DONOR POTENTIAL

Lot 72



767 - Black Baldie - Spring 2005
Sire: Southern Comfort
Dam: Slowburn

A.I. 5/20 Heatwave 5
PE Calvabull

SOME OF THE MOST POWERFUL COWS IN THE COUNTRY ARE SELLING IN THIS YEAR'S OFFERING. THIS SOUTHERN COMFORT DAUGHTER IS PERHAPS THE SOFTEST MADE, BIGGEST BODIED FEMALE TO SELL. SHE IS LONG NECKED, SOUND, AND NICE PROFILING. A DONOR CANDIDATE FOR ANY PROGRAM.

2 0 1 0 F I R S T C L A S S F E M A L E S A L E S

Lot 73



7760- Black Baldie - Spring 2005
Sire: Machinest
Dam: Meyer 60

A.I. 6/8 Grizzly

A HIGH QUALITY FEMALE WITH UNLIMITED POTENTIAL. THIS GOGGLE-EYED BALDY IS FLAT SHOULDERED, SMOOTH MADE, AND BIG HIPPED. A TRUE SALE FEATURE; LOOK THIS ONE UP SALE DAY.

YOUNG COW DIVISION

WITH DONOR POTENTIAL

Lot 74



501 - Black Blaze - Fall 2005
Sire: Imprint
Dam: Impinal

Sells open,
Ready to flush

HER SHE IS. THIS POWERFULLY CONSTRUCTED, MODERATE FRAMED IMPRINT DAUGHTER HAS BIG TIME DONOR WRITTEN ALL OVER HER. SHE IS LEVEL HIPPED, HUGE TOPPED, BIG BODIED, AND HAIRY. IF YOU WANT TO RAISE STEERS THIS IS THE ONE FOR YOU. READY TO FLUSH.

2 0 1 0 F I R S T C L A S S F E M A L E S A L E S

Lot 75



515- Black Brockle - Spring 2005
Sire: Mossy Oak
Dam: Simm Angus

A.I. 5/15 Grizzly

ANOTHER BROCKLE-FACED POWERHOUSE SELLS HERE. SHE IS FRONT PASTURE QUALITY WITH LOTS OF BODY DEPTH AND EYE APPEAL. A GREAT CANDIDATE FOR YOUR DONOR PROGRAM. YOU WON'T MISS HER SALE DAY. 515 IS ONE OF THE LEADING COWS FROM THE BEITELSPASCHER HERD.

YOUNG COW DIVISION

WITH DONOR POTENTIAL

Lot 76



200 - Black White - Spring 2006

Sire: Cervesa

Dam: Simmental

A.I. 6/15 Heatwave 5

PE Calvabull

A GREAT COW SELLS HERE. SHE IS JUST WHAT YOU NEED TO RAISE STEERS OR HEIFERS. SHE IS MODERATE KIND AND LEVEL HIPPED WITH LOTS OF BODY AND EYE APPEAL. HER HEAT WAVE CALF COULD PAY SHORT TERM DIVIDENDS.

2010 FIRST CLASS FEMALE SALES

Lot 77



64- Black - Spring 2006

Sire: Heatwave

Dam: Miss Sly

A.I. 6/15 Tiger Woods

A UNIQUELY DESIGNED COW THAT IS RIGHT ON TARGET FOR STEER OR HEIFER PRODUCTION WHEN BRED TO SOME OF TODAY'S TH FREE CLUB CALF BULLS. SHE IS LONG CLEAN FRONTED, SMOOTH SHOULDERED, AND EXTREMELY FEMININE.

YOUNG COW DIVISION

WITH DONOR POTENTIAL

Lot 78



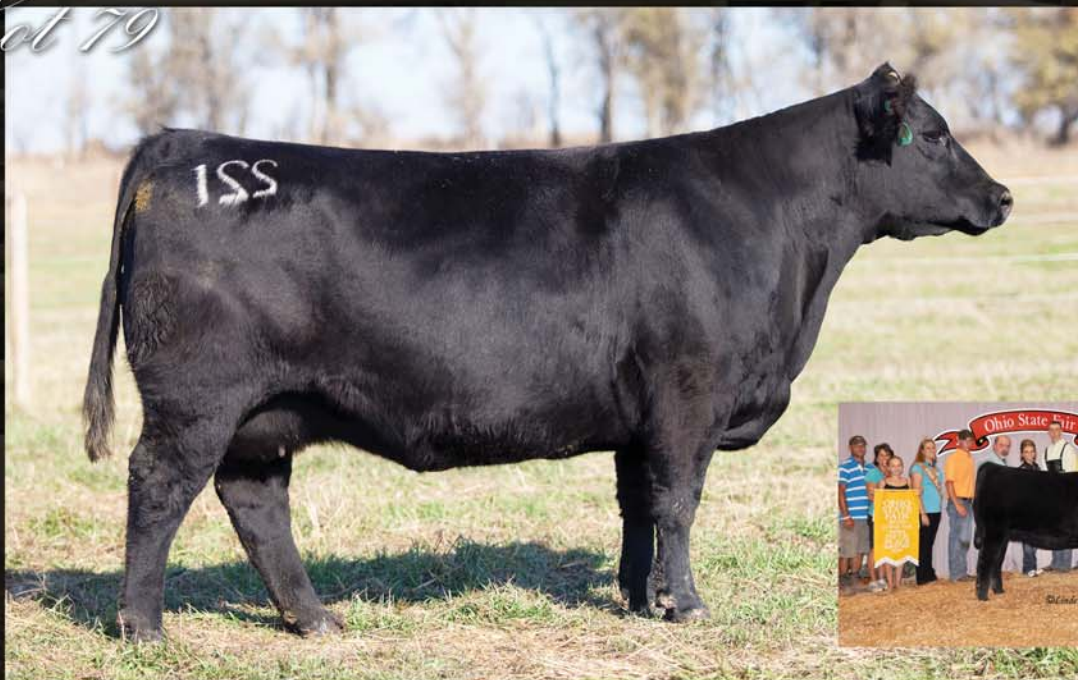
112 - Black - Spring 2007
Sire: Hairy Bear
Dam: Jack Frost

HERE IS A STEER MAKIN' FACTORY; DON'T MISS OUT. 112 IS A SMOOTH SHOULDERED, MODERATE SIZED, WELL BALANCED FEMALE WITH UNLIMITED POTENTIAL. A SALE FEATURE AND A FAVORITE OF MANY.

A.I. 6/26 Heatwave 5

2010 FIRST CLASS FEMALE SALES

Lot 79



221- Black - Spring 2002
Sire: DJ Patton
Dam: Maine Angus

A PROVEN DONOR WITH PAST HIGH SELLERS AND CHAMPIONS INCLUDING THE CHAMPION MARKET HEIFER AND 5TH OVERALL AT THE OHIO STATE FAIR Sired BY IMMORTAL. AI'D JUNE 1ST TO IMMORTAL AND ULTRASOUND SAFE TO CARRYING A FULL SIB BULL CALF.

A.I. 6/8 Immortal

YOUNG COW DIVISION

WITH DONOR POTENTIAL

Lot 80



630 - Black - Fall 2005
Sire: Who Made Who
Dam: Maine Angus

630 IS THE FIRST OF SEVERAL POWERFUL WHO MADE WHO DAUGHTERS TO SELL IN THIS YEARS OFFERING. THIS BIG HIPPED, LONG NECKED, POWERFUL COW WOULD BE A GREAT DONOR TO FLUSH TO HEAT WAVE.

A.I. 6/1 Grizzly

2 0 1 0 F I R S T C L A S S F E M A L E S A L E S

Lot 81



413- Black - Spring 2004
Sire: Payback
Dam: Maine Angus

IN TERMS OF MUSCLE MASS AND BONE THIS COW IS A GREAT ONE. SHE IS LONG NECKED, FLAT SHOULDERED, AND LEVEL TOPPED. ANOTHER BIG TIME STEER PRODUCER.

A.I. 6/18 Tiger Woods
PE Calvabull

BRED HEIFER DIVISION

MANY OF THESE FEMALES THAT WERE UNAVAILABLE ON PICTURE DAY SHOULD HAVE BEEN SALE FEATURES. COME AND EVALUATE THESE FEMALE YOURSELF AND YOU WILL SEE A HANDFUL THAT WILL FLOAT TO THE VERY TOP OF THE OFFERING. PLEASE CALL IF YOU HAVE ANY QUESTIONS REGARDING THE 2010 FIRST CLASS SALE.

Lot 82

6-209 - Black - Spring 2009
Sire: Dirty Hairy
Dam: Heatwave

A.I. 6/4 Bismark

Lot 83

4-18 - Black - Spring 2009
Sire: OCC Ledgend son
Dam: Sharpie

A.I. 6/6 Jupiter

Lot 84

69 - Black - Spring 2009
Sire: Total Solution
Dam: Maine Angus

A.I. 6/5 Northern Improvement

Lot 85

5-799 - Black - Spring 2009
Sire: Firewater
Dam: Mr. Big

A.I. 6/8 Final Answer

Lot 86

4-727 - Black - Spring 2009
Sire: Firewater
Dam: Godfather

A.I. 6/9 Bismarck

Lot 87

715 - Black - Spring 2009
Sire: Total Solution
Dam: Maine Angus
A.I. 6/6 Jupiter

Lot 88

656 - Black - Spring 2006
Sire: Who Made Who
Dam: Angus

A.I. 6/10 Milkman
PE HW 2

Lot 89

s26 - Black - Spring 2009
Sire: Alias
Dam: All About You

A.I. 6/17 Bismarck

Lot 90

ylw 38 - Silver - Spring 2009
Sire: Kojak
Dam: Maine Angus

A.I. 6/10 Northern Improvement

Lot 91

6-737 - Black Baldy - Spring 2009
Sire: Grizzly
Dam: Paddy O Malley

A.I. 6/14 Jupiter

Lot 92

6070 - Black Brockle - Spring 2006
Sire: Friction
Dam: Stop n Think

A.I. 7/3 Slightly Modified
PE HW2

Lot 93

548 - Black - Spring 2005
Sire: Heat Seeker
Dam: m34 Payback

PE Calvabull due mid April

Lot 94

004 - Black White - Spring 2009
Sire: Sun Seeker
Dam: Platinum

A.I. 6/19 Grizzly

Lot 95

920 - Black - Spring 2009
Sire: Alias
Dam: Meyer 734

A.I. 5/3 Northern Improvement

Lot 96

913 - Black Brockle - Spring 2009
Sire: Warrant
Dam: Cigar

A.I. 5/14 Ali

Lot 97

912 - Black - Spring 2009
Sire: Heat Seeker/Whiplash son
Dam: Cigar Son

A.I. 5/7 Ali

Lot 98

s911 - Black - Spring 2009
Sire: Monopoly
Dam: Nuf Said Maine

A.I. 5/3 I 80

Lot 99 A, B, C, AND D

A 5 UNITS OF DJ SALUTE
B 5 UNITS OF DJ SALUTE
C 5 UNITS OF DJ SALUTE
D 5 UNITS OF DJ SALUTE

PROMOTION BULL DIVISION
2010 FIRST CLASS FEMALE SALES

RUMOR HAS IT

Lot 100



tag ylw - Black - April 2010
Sire: Heat Seeker
Dam: Ice Pick 145

A DENVER PROSPECT BULL WITH UNLIMITED REVENUE POTENTIAL. ANYONE WHO WANTS TO GET INTO THE BULL BUSINESS SHOULD PAY ATTENTION. THIS HEAT SEEKER SON IS BIG LEGGED, WIDE STRUCTURED, AND MODERATE FRAMED. RUMOR HAS IT IS OUT OF THE \$62,000 COW THAT ALSO RAISED THE COLORADO STATE FAIR GRAND CHAMPION STEER.

2010 FIRST CLASS FEMALE SALES

BLOOD & GUTS

Lot 101



mono- Black - March 2010
Sire: Monopoly
Dam: Full Flush x Bowtie (Houdini)

ANOTHER DENVER PROSPECT. THIS POTENTIAL AI SIRE IS SOUND IN HIS STRUCTURE, BIG BODIED, AND SQUARE HIPPED. IT WOULD BE HARD TO FIND A MORE COMPLETE BULL.

PROMOTION BULL DIVISION
2010 FIRST CLASS FEMALE SALES

BAR NONE

Lot 102



3/4 MAINE

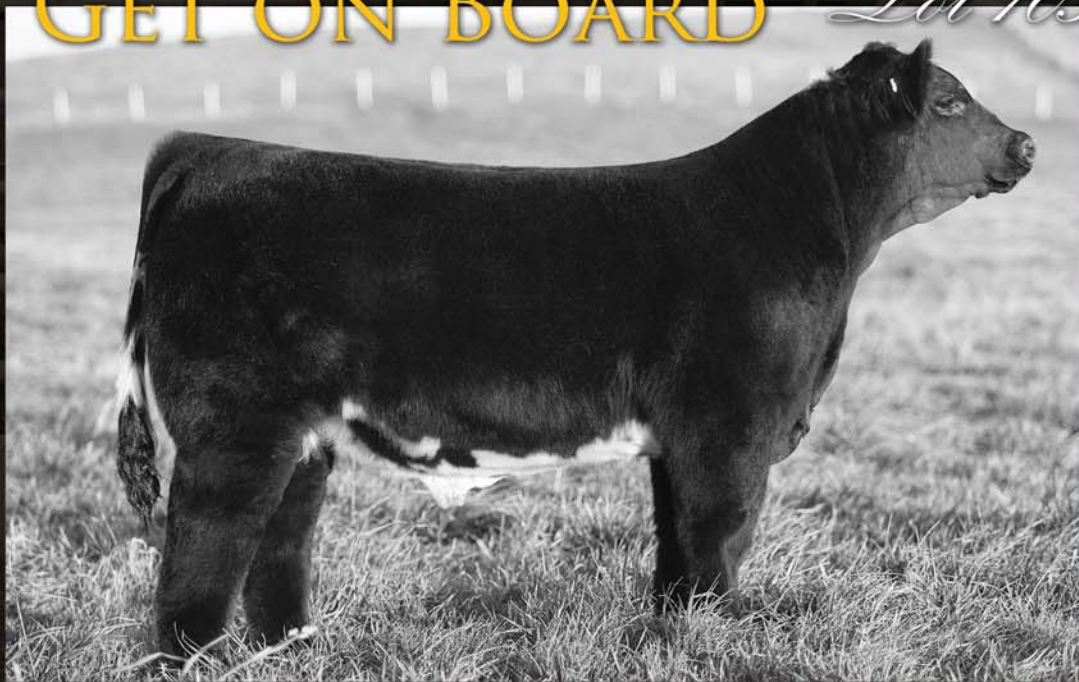
526 - Black - April 2010
Sire: Statesman
Dam: Paddy O Malley

THIS STATESMAN SON IS UNIQUE IN ITS TYPE AND KIND. HE IS SOUND, BIG LEGGED, SMOOTH BUILT, AND LONG NECKED. THERE IS GREAT POTENTIAL FOR HIS FEMALES TO BE PHENOMENAL.

2010 FIRST CLASS FEMALE SALES

GET ON BOARD

Lot 103



bull- Black White - March 2010
Sire: De Javu
Dam: Double Vision x Simmi

GET ON BOARD IS OUT OF A PICTURE PERFECT FEMALE; SHOWN BY THE LUSK FAMILY OF MINNESOTA WITH AN UNDEFEATED SHOW CAREER. FOR A SHORTHORN SIRE FEMALE SHE IS HUGE FOOTED, BIG BONED, POWERFUL AND VERY ATTRACTIVE IN HER FRONT THIRD. GET ON BOARD IS VERY SIMILAR IN BUILD. I BELIEVE THE FEMALES OUT OF THIS YOUNG SIRE WILL GO TO ON TO BE EXTREMELY GOOD CLUB CALF PRODUCING FEMALES.

GENETIC PACKAGE DIVISION

2010 FIRST CLASS FEMALE SALES

Reimann Whiskey Donors



Lot 104 A AND B

263 - Black - Selling Embryos
Sire: Irish Whiskey
Dam: Maine Angus

Lot 105 A,B, AND C

4 705 - Black - Selling Embryos, Pregnancy
Sire: Irish Whiskey
Dam: Maine Angus

263 IS ONLY 4 YEARS OLD, BUT SHE IS ONE OF THE BEST WHISKEY DAUGHTERS IN THE COUNTRY. JUST INTO EMBRYO PRODUCTION SHE WILL NO DOUBT BE A BIG TIME DONOR. THIS MAY BE YOUR ONLY OPPORTUNITY TO ACQUIRE THESE GENETICS.

4-705 IS THE LEADING IRISH WHISKEY DONOR AT REIMANN RANCHES. SHE HAS AN EXTREMELY HIGH AVERAGE ON HER PROGENY INCLUDING A \$51,000 HEIFER TO SULLIVAN'S, A \$37,000 STEER TO CALDWELL, A \$24,000 STEER TO RODGERS & GORETSKA, AND A \$17,000 STEER TO GUYER. HERE'S YOUR CHANCE; YOU DO THE MATH.

A 3 EMBRYOS 6 263 X HEAT WAVE

A 3 EMBRYOS 4 705 X BIG N RICH
(FULL SIBS TO MN STATE FAIR GRAND CHAMPION)

B 3 EMBRYOS 6 263 X HEAT WAVE

B 3 EMBRYOS 4 705 X HEAT WAVE

C PREG. RECIP. 4 705 X HEAT WAVE (DUE LATE MARCH)

LOTS B AND C ARE FULL SIBS TO THIS HEIFER OWNED BY SULLIVAN'S RES. SUPREME IOWA STATE FAIR

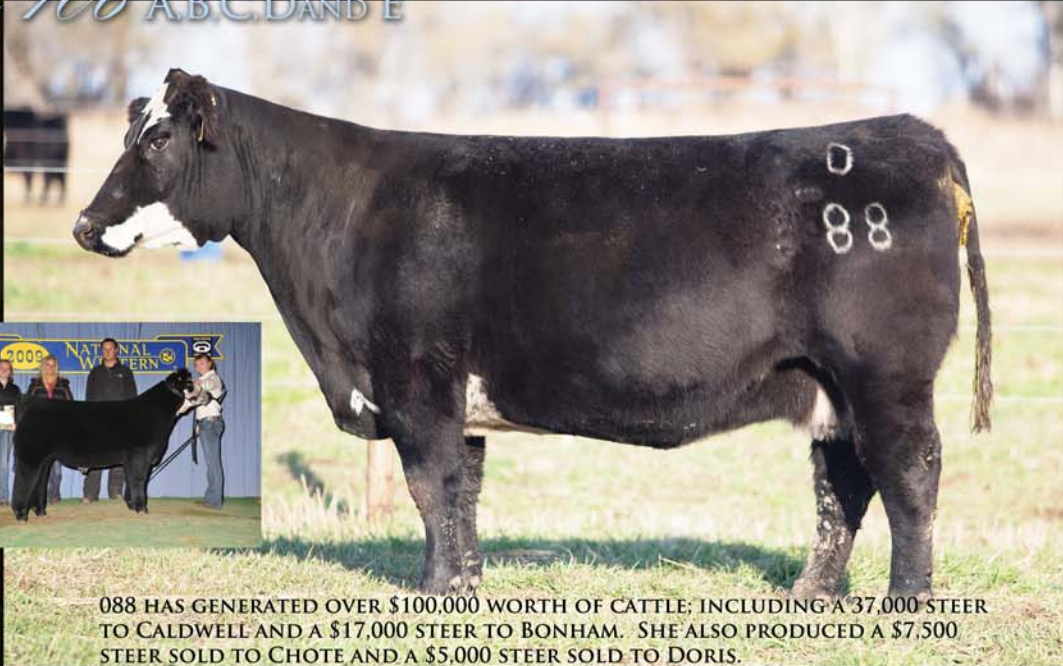


First Class December 11, 2010
39

GENETIC PACKAGE DIVISION

PROVEN CHAMPIONS

Lot 106 A B C D AND E



088 HAS GENERATED OVER \$100,000 WORTH OF CATTLE; INCLUDING A \$37,000 STEER TO CALDWELL AND A \$17,000 STEER TO BONHAM. SHE ALSO PRODUCED A \$7,500 STEER SOLD TO CHOTE AND A \$5,000 STEER SOLD TO DORIS.

o88 - Black Brockle -
Selling Embryos
Sire: Cactus
Dam: Simm Maine

A 3 EMBRYOS 088 X HEAT WAVE
B 3 EMBRYOS 088 X HEAT WAVE
C 3 EMBRYOS 088 X HEAT WAVE

D 3 EMBRYOS 088 X MONOPOLY
E 3 EMBRYOS 088 X IRISH WHISKEY

2010 FIRST CLASS FEMALE SALES

Lot 107



CARNAC X 15-5



WALKS ALONE X 15-5



HEAT WAVE X 15-5



15-5 - Black - Selling Embryos
Sire: Larado
Dam: Northern Improvement

IF THIS MATING DOESN'T GET YOU EXCITED THEN YOU BETTER CHECK YOUR PULSE. THESE EMBRYOS ARE FULL SIBS TO RESERVE GRAND CHAMPION STEER AT THE 2010 IOWA STATE FAIR, CHAMPION PROSPECT STEER AT 2010 SIOUX EMPIRE FARM SHOW, RESERVE CHAMPION AT 2010 ISU BLOCK AND BRIDLE PROSPECT SHOW AND RESERVE CHAMPION AT 2010 AGR PROSPECT SHOW. THIS MASSIVE AND FAULT FREE DONOR IS REALLY STARTING TO HIT IT BIG. SHE HAS PRODUCED OVER \$75,000 IN PROGENY WITH JUST 4 CALVES IN 3 YEARS. SERIOUS BREEDERS SHOULD MARK THIS ONE DOWN. BUY WITH CONFIDENCE. SELLING ONE PACKAGE OF 3 EMBRYOS. 15-5 X CARNAC

THANK YOU FOR YOUR
Thank You
INTEREST.

REFERENCE SIRE

- ABERDEEN
- ALI
- BISMARCK
- CARPE DIEM
- CALVABULL
- STATESMAN
- DE JAVU
- DOC
- DUBAI
- DUFF BASIC INSTINCT
- FINAL ANSWER
- GRIZZLY
- I-80
- IMMORTAL
- JUPITER
- MAXI
- MERCEDES BENZ
- MILKMAN
- N. IMPROVEMENT
- OCC JUST RIGHT
- PVF RAPTOR
- SLIGHTLY MODIFIED
- STATESMAN
- TIGER WOODS
- TOTAL RECALL
- TOTAL SOLUTION
- WALKS ALONE
- WISDOM

LUTTON X TC PRIDE
POLLED ENERGIZER X FJH LEGACY
GRID MAKER X FIX IT
TANK X TIMEX/CANNON
DIRTY HAIRY
DDC THE MAN X JAZZ
FULL FLUSH X TJ MAINE
OCC DOCTOR X SIMM ANGUS
IRISH WHISKEY X CHILL FACTOR
OCC EMBLAZON X POPATOP
TRAVELER 8180 X BONVIEW BANDO
(GRIZZ X BLACK BEAR) (HOTMAIL X SIMM)
ALI X HARD DRIVE
HEAT WAVE X ANGUS/FULL THROTTLE/ANGUS
OCC EMBLAZON X DIXIE ERICA
GCC MAXI MILLION X BROKER
ALI X DR. WHO
HEAT WAVE X CHAROLIAS
TC STOCKMAN X TC PRIDE
OCC EMBLAZON X OSCAR
FULLBACK X RITO 263
DIRECT HIT X AMMO/HABENERO
DCC THE MAN X JAZZ
MONOPOLY X DR.WHO
OCC MISSING LINK X EMBLAZON
WHO MADE WHO X HABANERO/SIMM ANGUS
HEAT WAVE X FULL FLUSH/DRAFT PICK SON
SOONER X ICEMAN

REG. ANGUS
PUREBRED MAINE
REG. ANGUS
HEREFORD CROSS
3/4 MAINE
PUREBRED MAINE
CROSS
7/8 ANGUS
3/4 MAINE
REG. ANGUS
REG. ANGUS
1/2 SIMMENTAL
PUREBRED MAINE
CROSS
REG. ANGUS
REG. ANGUS
3/4 MAINE
CROSS
REG. ANGUS
REG. ANGUS
REG. ANGUS
CROSS
3/4 MAINE
CROSS
REG. ANGUS
CROSS
CROSS
PUREBRED MAINE

Lot 32



WE FIND IT VERY ENCOURAGING THAT HEIFERS SELLING FOR AS LITTLE AS \$1600 AND HEIFERS SELLING FOR 15K - 20K ARE ALL MORE THAN PAYING FOR THEMSELVES IN A VERY LIMITED TIME. IT IS OUR GOAL, SINCE DAY ONE, TO INJECT HIGH QUALITY CATTLE INTO THE INDUSTRY THAT ANSWER WHEN CALLED UPON. INVESTING IN FIRST CLASS FEMALES HAS, AND WILL CONTINUE TO PAY. THERE IS MORE VALUE TO YOUR DOLLAR IN THIS POWERFUL OFFERING.

PAST SUCCESS

LOT 24 HEAT WAVE HFR SOLD FOR \$1600
FIRST CALF SOLD FOR \$15,000

LOT 22 JOHNNY WALKER RED HFR SOLD FOR \$15,000
FLUSH SOLD FOR \$5000 +
EMBRYOS SOLD FOR \$800
FIRST CALF SOLD FOR \$4500

LOT 19 DOC HFR SOLD FOR \$2400
FIRST CALF SOLD FOR \$5000

LOT 78 ALI HFR SOLD FOR \$2000
FIRST CALF SOLD FOR \$5000

LOT 18 N. IMPROVEMENT HFR SOLD FOR < \$3,000
FIRST CALF SOLD FOR \$10,000

LOT 31 FRICTION SOLD 1/2 INTEREST FOR \$12,500
FIRST FLUSH PRODUCED 24 EMBRYOS
RESULTING IN 10 HD AVG. \$4000
FOR A TOTAL OF \$40,000

LOT 20 LUTTON HFR SOLD FOR \$13,000
FIRST CALF SOLD FOR \$7000
SECOND CALF SOLD FOR \$4500

AND THAT IS JUST THE BEGINNING...
THESE CATTLE WILL MAKE YOU MONEY

SATURDAY, DECEMBER 11, 2010

THE
FIRST
Class

FEMALE SALE

Sale Office Address:
Chris Rosa
308 Ilion Ave
Chariton IA 50049

SATURDAY, DECEMBER 11, 2010

Only The Best

